

## 21:9 Curved UltraWide Monitor

The multi-display solution for traders and analysts

### ▶ 34UC87M-B

34" class (34.0" measured diagonally)



## Features

### MAXIMIZE WORK EFFICIENCY

LG's single 21:9 Curved Display is 2.4 times wider than a standard 16:9 configuration. Boasting of 3440x1440 QHD resolution, this display offers a wide work space to view multiple files at once without the bezel distortion caused by a normal dual monitor set-up.

### 4-SCREEN SPLIT FEATURE

- Efficiently run several programs and have multiple active windows on the screen at the same time.

### LARGER ON-SCREEN VIEWING

- LG's dual 21:9 UltraWide Curved display setup takes up less desk space while providing a significantly greater amount of display real estate.

### MULTIPLE DISPLAY SOLUTIONS

- The 34UC87M consists of 6 displays that seamlessly connect feeling like a single screen.

## Specifications

Native Display Resolution 3440x1440 / 21:9 UltraWide QHD

High Brightness 300 cd/m<sup>2</sup>

Built-in Speakers

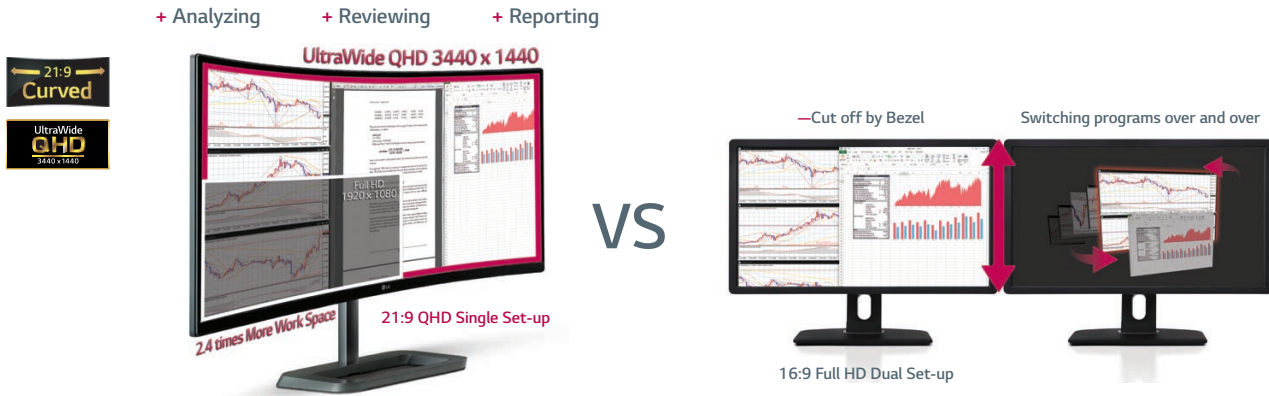
Tilt, Height Adjustable, Base Detachable Stand

Vesa™ Compliant Wall Mountable

3-Year Limited Warranty Parts/Labor/Backlight

## STRETCHING THE LIMITS OF DISPLAY REAL-ESTATE


LG's single 21:9 Curved Display is 2.4 times wider than a standard 16:9 configuration. Boasting of 3440x1440 QHD resolution, this display offers a wide work space to view multiple files at once without the bezel distortion caused by a normal dual monitor set-up.

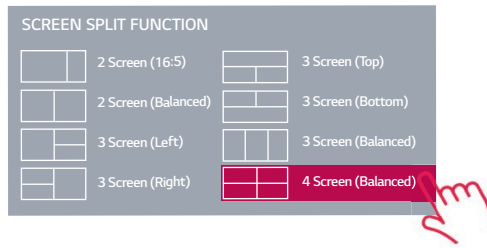


## 4-SCREEN SPLIT ORGANIZES THE SCREEN SPACE

Efficiently run several programs and have multiple active windows on the screen at the same time. With a standard 16:9 Full HD display, it is painfully tiresome to adjust each active window continually while you are working on them. With the 4-Screen Split feature, multiple active programs can be divided up effortlessly on a single screen, which automatically re-size to fit available spaces with a simple click or drag. Working with real-time data, research, and writing analysis reports are made easier and more efficient.

### How to Install & Use the 4-Screen Split Feature

1. Install the 4-screen split software from the CD included in the package.
2. Locate the 4-Screen Split icon [  ] located on the task bar.
3. Select the Screen Split layout desired.



## LG'S DUAL MONITOR SETUP PROVIDES A LARGER WORK SPACE THAN A TRIPLE 16:9 STANDARD MONITOR SETUP

A triple 16:9 Full HD display setup may provide more screen information than a single monitor, but the desk space needed is inconvenient and inefficient. LG's dual 21:9 UltraWide Curved display setup takes up less desk space while providing a significantly greater amount of display real estate. When comparing LG's 34UC87M dual monitor setup to that of a conventional 16:9 Full HD triple monitor configuration, the width of the 34UC87M is 89% of a conventional triple monitor setup while delivering an impressive 159% of on-screen working space.



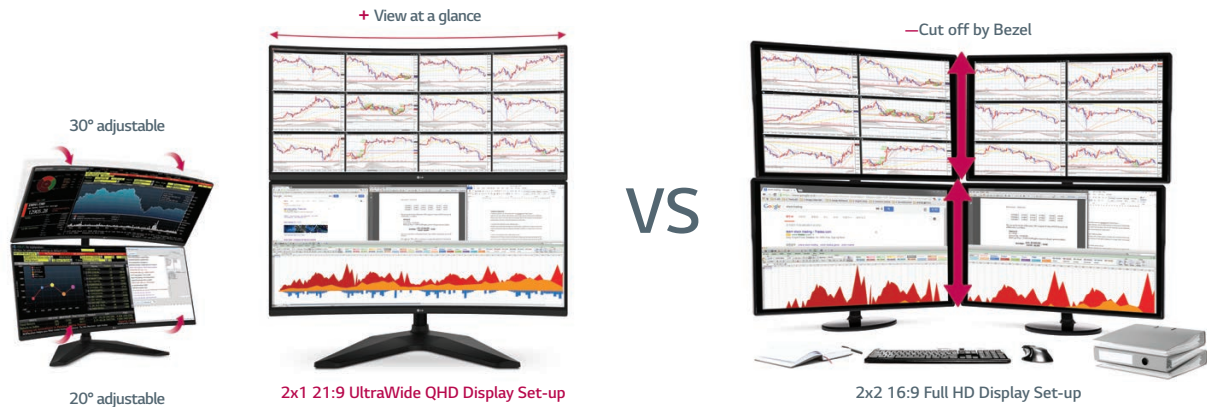
- + 59% LARGER ON-SCREEN WORK SPACE
- 11% LESS ACTUAL MONITOR WIDTHS ON DESK



\*\*The width of 27" 16:9 monitors complies with that of conventional monitors, and this may vary depending on each monitor.

## TRACK THE GLOBAL TRENDS AT-A-GLANCE WITHOUT ANY INTERRUPTIONS BY A BEZEL

A 2x2 Multi-Display setup is a good option for analysts who have to continuously monitor and analyze the global trends and stock markets. With a 2x2 standard 16:9 Full HD setup, the displays are interrupted by a bezel that causes visual distractions and discomfort. With a 2x1 34UC87M Multi-Display configuration, analyzing long charts without interruption from a bezel is possible. It is one of the best solutions for analysts providing a wider working space.

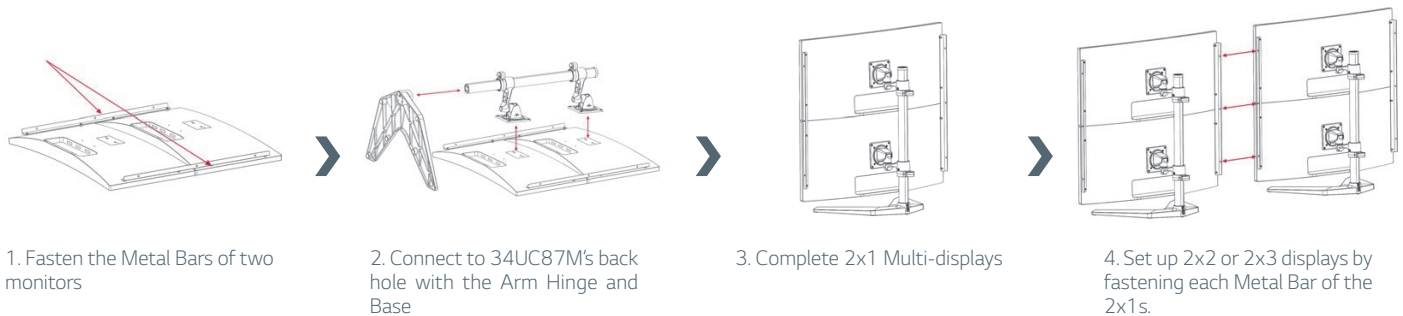


## THE MULTI-DISPLAY SOLUTION FOR YOUR OPTIMAL TRADING WORKSTATION

To keep track of the continuously changing stock market, it is essential to add multiple monitors in the office to be more productive. With standard 16:9 monitors, taking in all the information causes eye fatigue from thick disrupting bezels. Also, trying to align the data to avoid it from being cut-off is difficult. The 2x3 multi-display setup of the 34UC87M consists of 6 displays that seamlessly connect feeling like a single screen. Analysis of information can be made all at once allowing for easier trading decisions resulting in profitable opportunities.



## HOW TO SET UP THE MULTI-DISPLAY



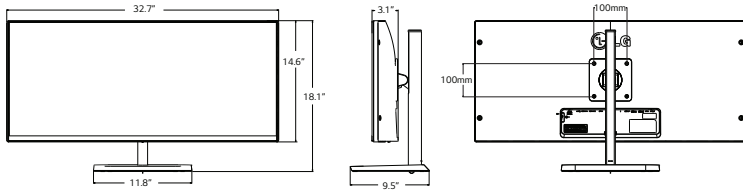
# 21:9 Curved UltraWide Monitor

The multi-display solution for traders and analysts

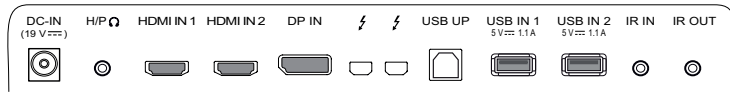
▶ 34UC87M-B

34" class (34.0" measured diagonally)

Dimensions



Rear Jack Panel



PANEL	Model	34UC87M-B
	Panel Size	34" class (34.0" measured diagonally)
	Panel Type	IPS
	Color Gamut (CIE1931)	sRGB 99%
	Color Depth (Number of Colors)	10bits
	Pixel Pitch (mm)	0.2325 [mm] x 0.2325 [mm]
	Aspect Ratio	21:9
	Native Resolution	3440 x 1440
	Brightness	300 cd/m <sup>2</sup>
	Contrast Ratio (Typ.)	1,000:1
	Dynamic CR (DFC)	Mega
	Response Time	14ms (on/off), 5ms (G to G)
	Viewing Angle (CR≥10)	R/L 178° (Typ.), U/D 178° (Typ.)
	Surface Treatment	Hard coating(3H), Anti-glare
	Curved	3800R
SIGNAL (INPUT)	HDMI	2
	DisplayPort	1
	Thunderbolt	2
	Others	IR In
SIGNAL (INPUT)	Others	IR Out
AUDIO (OUTPUT)	Headphone Out	Yes
SPEAKER	Type	2ch (L/R)
	Audio Output (Watt)	7W x 2
	Others	Maxx Audio

SPECIAL FEATURES	Model	34UC87M-B
	USB Up	1
	USB port	2
	PC	Yes
	Video	Yes
	Sound	Yes
	sRGB	Yes
	DDC/CI	Yes
	HDCP	Yes
	PBP	Yes
	Reader Mode	Yes
	Flicker Safe	Yes
	Six Axis Control	Yes
	Factory Calibrated	Yes
	Plug & Play	Yes
	Others1	Screen Split (S/W)
	Others2	Picture ID/Set ID
CABINET	Color	Black
	Stand/Base Color	Dark Silver
	Monitor w/stand	32.7" x 9.5" x 18.1"
	Monitor Weight	22.0 lbs
	Monitor w/o stand	32.7" x 3.1" x 14.6"
	Monitor Weight	17.6 lbs
	Carton Dimensions	35.6" x 6.4" x 20.2"
	Packed Weight	28.7 lbs
	Base Detachable	Yes
	Tilt (Angle)	-5°-15°
	Height (mm)	140mm
	VESA™ Standard Mount Interface	100mm x 100mm
	POWER	Power Type
Power Supply		100-240V
FREQUENCY	HDMI (H-Frequency)	30-90kHz
	HDMI (V-Frequency)	56-61Hz
	DisplayPort (H-Frequency)	30-90kHz
	DisplayPort (V-Frequency)	56-61Hz
	Thunderbolt (H-Frequency)	30-90kHz
	Thunderbolt (V-Frequency)	56-61Hz
RESOLUTION	DisplayPort (PC)	3440 x 1440
	Thunderbolt (PC)	3440 x 1440
	HDMI (Video)	3440 x 1440
STANDARD CERTIFICATIONS	UL(cUL)	Yes
	TUV-GS	TUV-Type
	EPEAT Gold	Yes
	FCC-B, CE	Yes
	CCC, BSMI	Yes
	EPA, ErP	Yes
	Windows 8	Yes
	DisplayPort	Yes
	USB3.0	Yes
Others	Thunderbolt	
WARRANTY	3-Year Limited Warranty (Parts/Labor/Backlight)	
UPC	7 19192 19615 5	
ACCESSORIES	Power Cord	Yes
	DisplayPort	Yes
	HDMI	Yes
	S/W Install CD	Screen Splitter



LG Electronics U.S.A., Inc.  
HE B2B Division  
2000 Millbrook Drive  
Lincolnshire, IL 60069

Customer Service: 888.865.3026  
www.LGsolutions.com/support

Contact your LG Regional Sales Representative:  
Channel: 800.897.8871  
Hospitality: 800.228.1236  
E-mail: info@LGsolutions.com

SPEC\_34UC87M-B\_121416\_PR



All screen images are simulated. Dimensions and weights are approximate. Design, specifications, and features subject to change without notice.

© Copyright 2014 LG Electronics USA, Inc. All Rights Reserved. "LG Life's Good" is a registered trademark of LG Corp.

ENERGY STAR is a registered trademark of the U.S. Environmental Protection Agency. In Plane Switching is a trademark of LG Philips LCD Ltd. VESA is a trademark of Video Electronics Standards Association. HDMI, the HDMI logo and High-Definition Multimedia Interface are trademarks or registered trademarks of HDMI Licensing LLC.

All other product and brand names are trademarks or registered trademarks of their respective companies.

Printed in the USA. December 2014